

# Lake in the Hills

## Urban Forestry Summary



CHICAGO  
REGION  
TREES  
INITIATIVE

Our Trees.  
Our Communities.  
Our Future.

The Chicago Region Trees Initiative's (CRTI) goal is that by 2050 the Chicago region will have a healthier urban forest with a diversity of tree species and ages, appropriately distributed across land use types. To achieve that goal, CRTI works with municipalities to help them understand their urban forest and identify strategies that they can use to improve the environmental, economic, and social benefits that trees can provide their residents. This document provides information municipalities need to effectively manage their local forest.

### The Importance of Urban Trees

The urban forest includes all trees in an urban setting regardless of who owns or manages them, such as parkway trees, forested natural areas, and the trees on residential property. Trees improve air and water quality, reduce flooding and the urban heat island effect, and reduce energy use by shading buildings. They also provide habitat for wildlife and improve residents' quality of life by reducing crime rates, increasing property value, and boosting social cohesion in neighborhoods.

Understanding the extent of tree canopy is critical for urban planning. The magnitude of benefits that trees provide correlates with the size, structure, and location of their canopy. Canopy maps can be used to quantify the benefits that their trees provide, identify where new plantings would have the greatest impact, and to develop strategies for expanding the canopy.



Figure 1: Comparison of imagery and land cover map. Seven types of gray and green infrastructure are in the land cover map.

The Chicago Region Trees Initiative, US Department of Agriculture Forest Service, and the University of Vermont mapped land cover across the seven-county Chicago region in a project funded by the Illinois Department of Natural Resources, the Rice Foundation, and the US Forest Service. This project not only identifies tree canopy, but also other green infrastructure, including grass and shrubs, bare soil and water, and gray infrastructure including buildings, roads and rails, and other paved surfaces like sidewalks and parking lots (Fig. 1). Hereafter, these seven layers will be referred to as “land cover types.”



# Lake in the Hills Urban Forestry Summary



**CHICAGO  
REGION  
TREES  
INITIATIVE**

Our Trees.  
Our Communities.  
Our Future.

## Land and Canopy Cover in Your Community

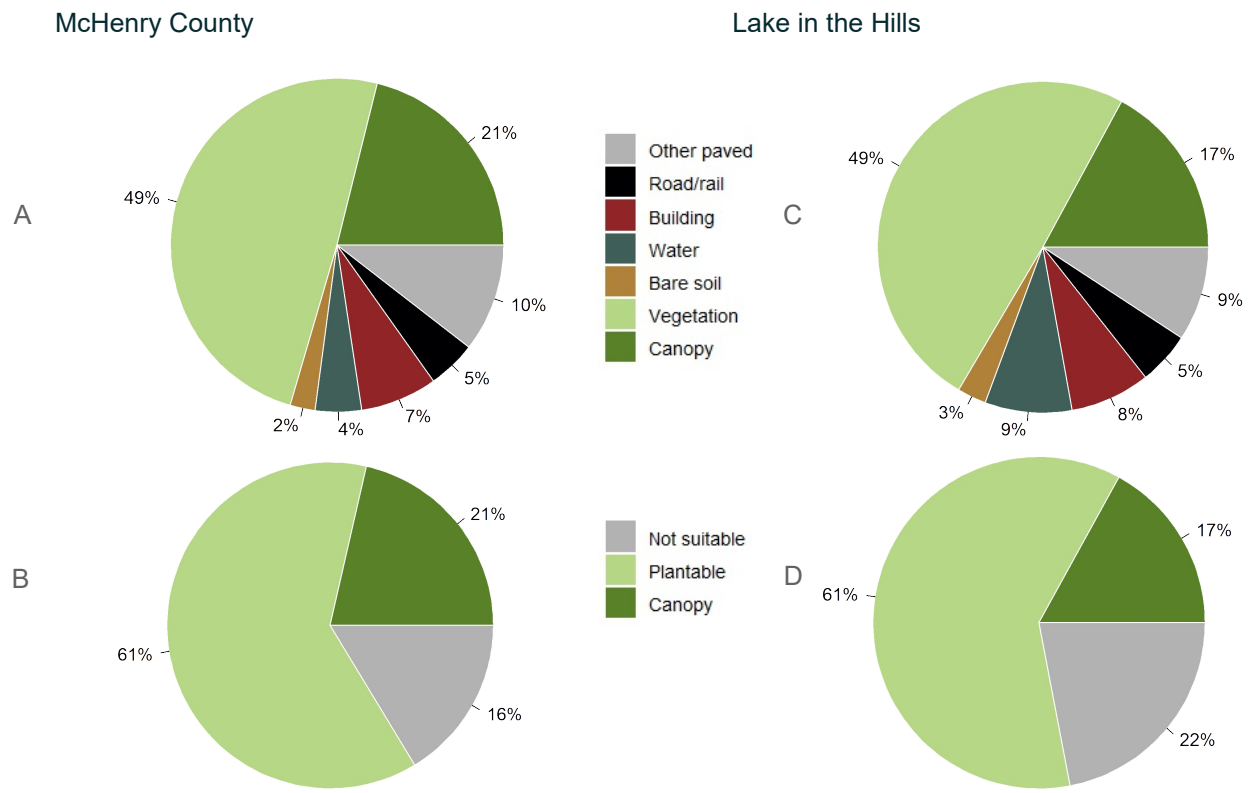


Figure 2: Land cover distribution and plantable space in McHenry County (A and B), and in Lake in the Hills (C and D).

Overall, 21% of McHenry County is covered by tree canopy (Fig. 2). In all, 61% of the county is plantable, meaning that canopy cover could potentially be raised to 84% if these areas were converted to trees. Spaces where trees could potentially be planted (plantable spaces) can be identified by adding together land cover types that could be converted to canopy: vegetation, bare soil, and other paved surfaces like sidewalks and parking lots.

It is important to note that while these surfaces could theoretically be covered with canopy, it is not necessarily preferable. For example, agricultural fields and baseball diamonds are included as “plantable space,” but they may not be considered ideal sites to expand the forest canopy.

Land cover data can also describe canopy at the municipal scale. Lake in the Hills currently has 17% canopy cover and could potentially increase its canopy to 78% (Fig. 2).

# Lake in the Hills

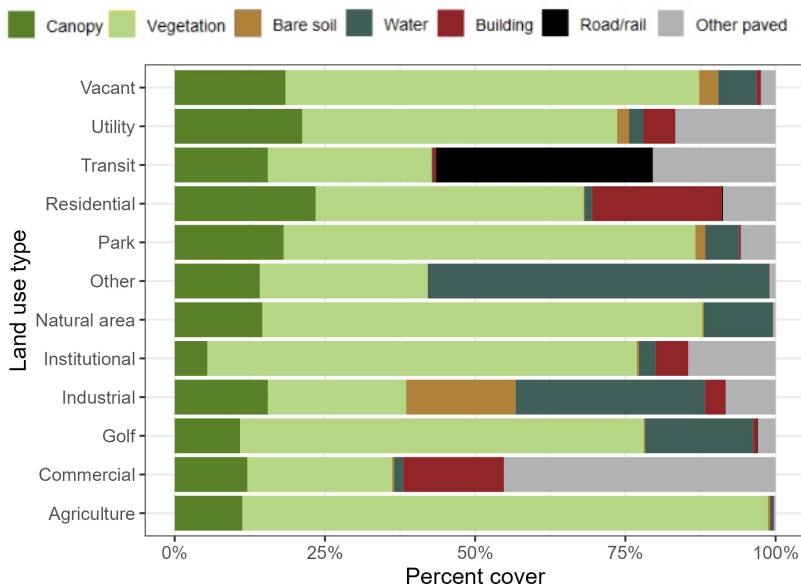
## Urban Forestry Summary



**CHICAGO  
REGION  
TREES  
INITIATIVE**

Our Trees.  
Our Communities.  
Our Future.

### Percent Land Cover by Land Use



Canopy cover is not distributed evenly across the region or within municipalities. To better understand how land cover patterns vary, they are compared across land use types like residential, commercial, or park properties. In Lake in the Hills, the highest percentage of canopy is found in utility and residential properties (Fig. 3). Agricultural and institutional properties have the lowest canopy cover. As one might expect, transit areas have the largest proportion of roads, and industrial, residential, and commercial land use types have an abundance of buildings. See Table 1 on page 5 of this report for a detailed analysis of land cover distribution.

Figure 3: Variations in land cover across land use types.

### Plantable Space Percentages

By combining turf, bare soil, and other paved surface categories, we can identify which land use types have the most room for growth. In Lake in the Hills, the highest proportions of plantable space are found in agricultural and institutional properties (Fig. 4).

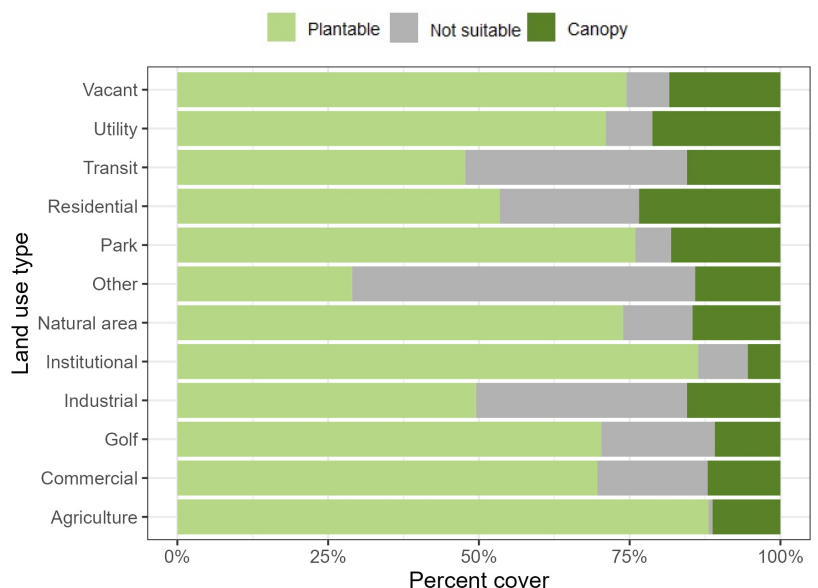


Figure 4: Current canopy and possible planting space across land use types.

# Lake in the Hills

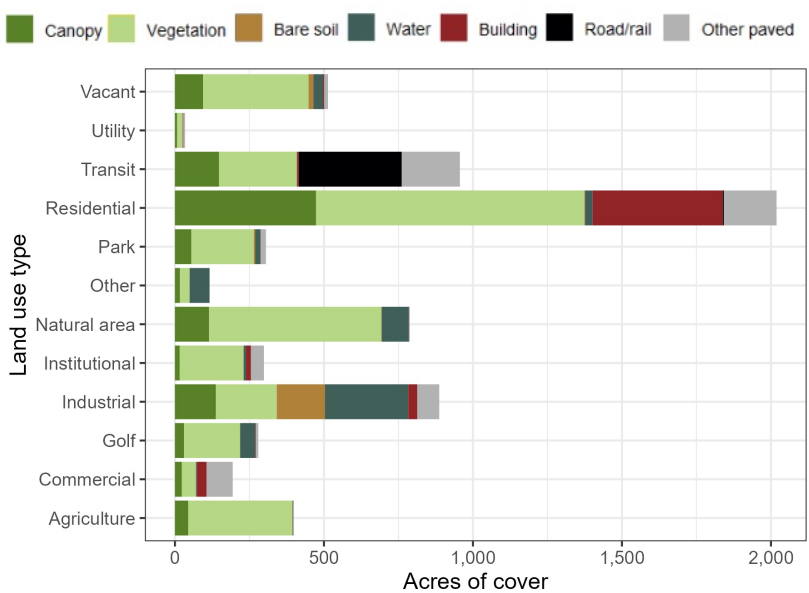
## Urban Forestry Summary



**CHICAGO  
REGION  
TREES  
INITIATIVE**

Our Trees.  
Our Communities.  
Our Future.

### Land Cover Area by Land Use



While agricultural and institutional properties have a high proportion of plantable space, these land use types makes up a relatively small area in Lake in the Hills (Fig. 5). Most of the land is residential followed by transit.

Figure 5: Acres of land cover types across land uses.

### Plantable Space Area

Residential and natural areas could have the greatest impact in expanding the canopy (Fig. 6). However, each of these land use types require different strategies to increase canopy. Residential property owners could be encouraged to plant more through tree giveaways, ordinances that encourage preservation, or stormwater tax breaks for properties that have more canopy. Increasing canopy in natural areas is not always desirable, especially if these sites are prairies or savannas. It may be possible to plant trees in picnic groves. Emphasizing the use of native species can extend habitat benefits to these areas.

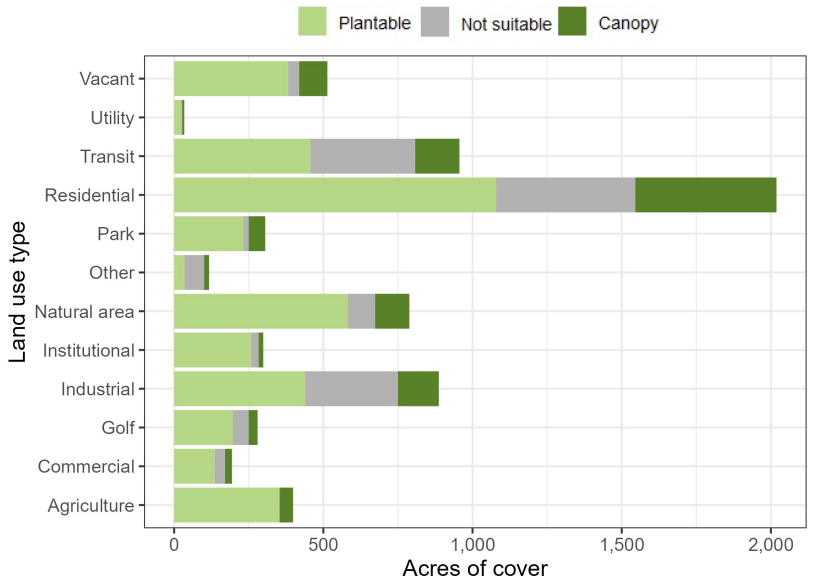


Figure 6: Acres of plantable space, canopy, and not suitable land cover types across land uses.

# Lake in the Hills Urban Forestry Summary



**CHICAGO  
REGION  
TREES  
INITIATIVE**

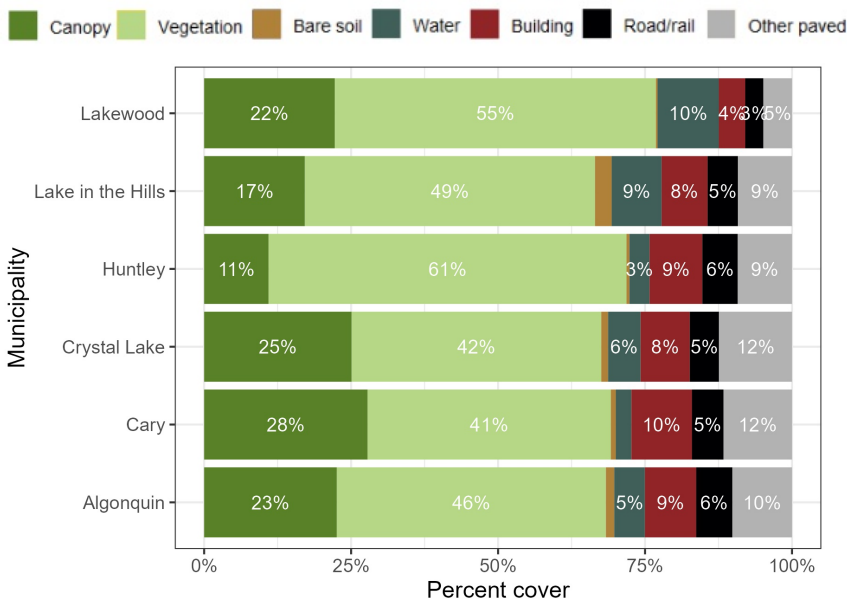
Our Trees.  
Our Communities.  
Our Future.

## Land Cover Across Land Use Types

Table 1: Summary of land cover across land use types.

LAND USE	CANOPY		VEGETATION		BARE SOIL		WATER		BUILDINGS		ROADS/RAIL		OTHER PAVED	
	ACRES	PERCENT	ACRES	PERCENT	ACRES	PERCENT	ACRES	PERCENT	ACRES	PERCENT	ACRES	PERCENT	ACRES	PERCENT
Agriculture	45	11.3%	349	87.5%	1	0.3%	2	0.5%	0	0.1%	0	0.0%	1	0.3%
Commercial	23	12.1%	47	24.1%	1	0.3%	3	1.5%	32	16.7%	0	0.0%	88	45.2%
Golf	30	10.9%	188	67.2%	1	0.2%	50	18.0%	2	0.7%	0	0.1%	8	2.9%
Industrial	138	15.5%	204	23.0%	162	18.2%	279	31.5%	31	3.5%	0	0.0%	74	8.3%
Institutional	16	5.4%	213	71.5%	1	0.3%	8	2.8%	16	5.4%	0	0.0%	43	14.5%
Natural area	115	14.6%	577	73.2%	2	0.2%	91	11.5%	0	0.0%	0	0.0%	3	0.4%
Other	17	14.2%	33	27.9%	0	0.0%	66	56.8%	0	0.1%	0	0.0%	1	1.0%
Park	55	18.1%	209	68.5%	5	1.7%	17	5.6%	1	0.3%	0	0.0%	18	5.8%
Residential	474	23.5%	900	44.6%	3	0.1%	25	1.3%	437	21.6%	3	0.2%	177	8.8%
Transit	148	15.5%	260	27.2%	1	0.1%	1	0.1%	5	0.6%	345	36.1%	195	20.4%
Utility	7	21.2%	18	52.4%	1	2.0%	1	2.4%	2	5.3%	0	0.0%	6	16.7%
Vacant	95	18.5%	354	68.8%	16	3.2%	32	6.3%	4	0.7%	0	0.1%	13	2.4%

## Land Cover in Surrounding Communities



Lake in the Hills has less canopy cover than most of its neighbors and similar amounts of gray infrastructure (Fig. 7).

Figure 7: Comparison of land cover of Lake in the Hills and its neighbors.

# Lake in the Hills Urban Forestry Summary



**CHICAGO  
REGION  
TREES  
INITIATIVE**

Our Trees.  
Our Communities.  
Our Future.

## Canopy change from 2010 to 2017

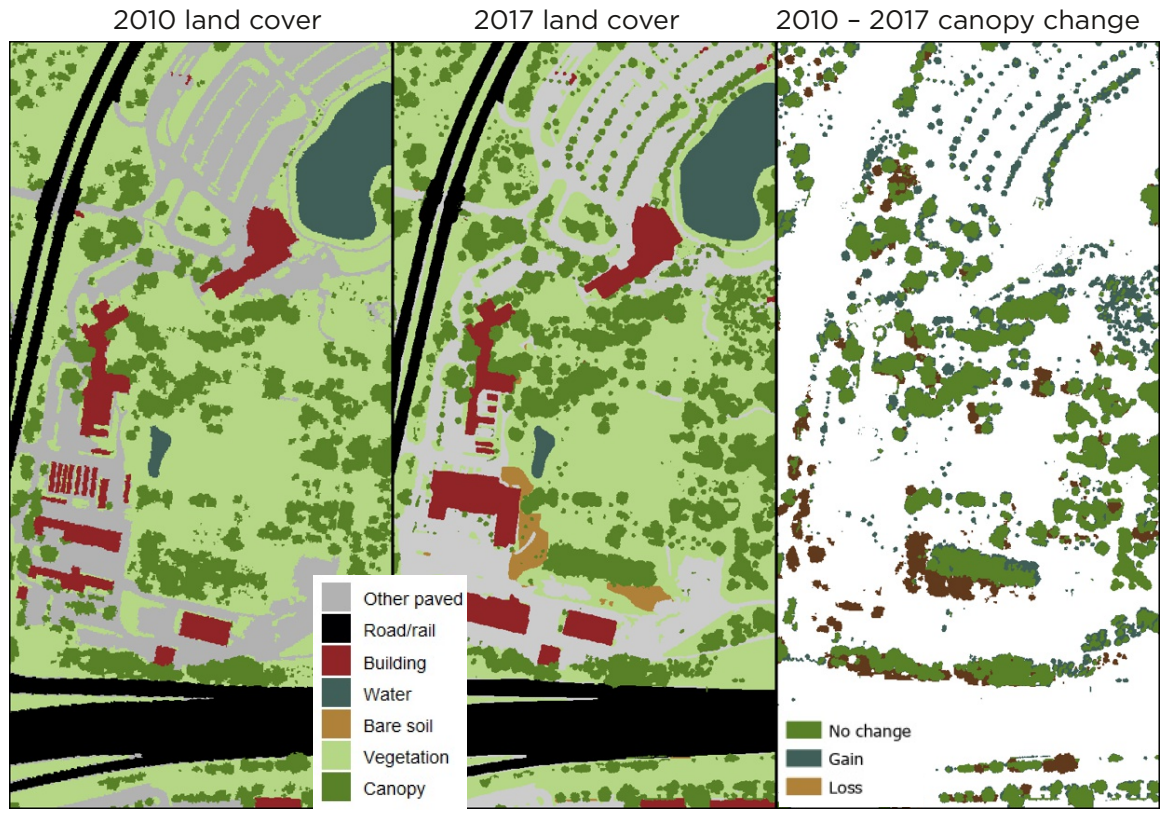


Figure 8: Example of land cover and canopy change at the Morton Arboretum.

The Chicago region has changed a lot from 2010 to 2017, including new development, tree plantings, and growth of existing trees. Examples of this can be seen at the Morton Arboretum (Fig 8).

In Lake in the Hills, canopy has increased from 14% to 17% with canopy rising across most land use types (Fig. 9).

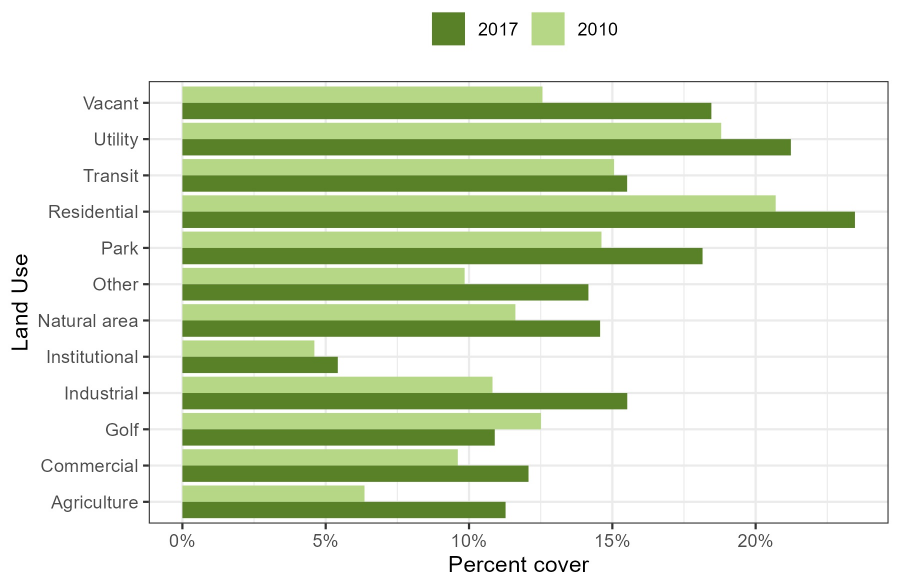


Figure 9: Canopy change across land use types in Lake in the Hills.

# Lake in the Hills Urban Forestry Summary



CHICAGO  
REGION  
TREES  
INITIATIVE

Our Trees.  
Our Communities.  
Our Future.

## Know What You Have

While understanding canopy is an important component of urban forestry, canopy does not show the whole picture. It cannot identify tree species, health, or vulnerability to pests, diseases, or climate change. A tree inventory is needed to better understand and manage the urban forest (Fig. 10).

Types of tree inventories vary. The most complete inventories gather data on every tree in the study area and each tree's species, size, any health issues it may have, and its specific location. This type of inventory provides the most complete data for planning and monitoring the urban forest's health and growth over time. Many communities have conducted such inventories on public property.

Complete inventories are invaluable for urban forest management but are expensive and time consuming to conduct. They may not be practical for very large areas. Sample inventories (that only gather information on a subset of trees) are much easier to conduct but can only be used to estimate species and size diversity, and tree abundance. The Morton Arboretum and the USDA Forest Service conducted a sample inventory of 1,600 plots across the seven-county region and determined species composition at the county scale (Fig. 11).

The CRTI does not currently have access to a tree inventory from Lake in the Hills. If an inventory is sent to CRTI, we will add summary information to this document.



Figure 10: Measuring a tree for an inventory.



Figure 11: You can learn more about the tree census here: <https://mortonarb.org/science/tree-census/>

# Lake in the Hills Urban Forestry Summary



CHICAGO  
REGION  
TREES  
INITIATIVE

Our Trees.  
Our Communities.  
Our Future.

## The Unique Benefits of Your Community

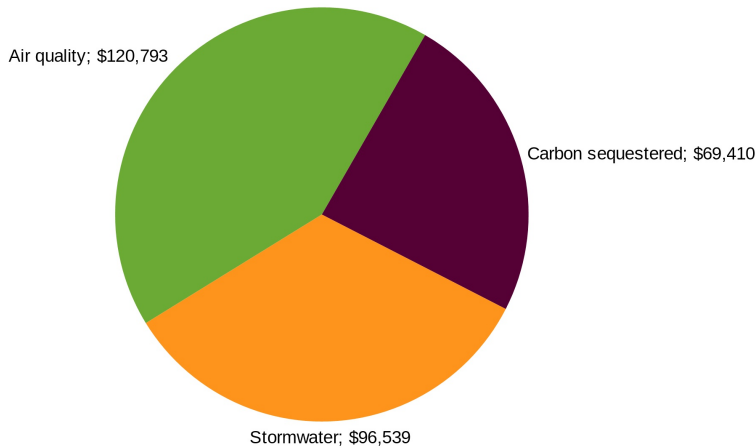


Figure 12: Trees offer myriad benefits, including intercepting stormwater, improving air quality and removing carbon from the atmosphere.

Urban trees are extremely valuable. Research has provided data to help quantify the values that trees provide, far beyond the aesthetics that are readily recognized. For example, urban trees:

1. Save energy by reducing surface temperatures and shading buildings.
2. Store carbon dioxide and remove pollutants from the air.
3. Intercept stormwater and help reduce flooding.
4. Increase property values and make our communities more pleasant.
5. Improve health.

The i-Tree suite of tools was developed by the USDA Forest Service. They allow users to calculate tree benefits at a variety of scales—from an individual tree to entire tree inventories, and even landscape scale assessments of canopy and hydrology. For more information on i-Tree tools and methodology, visit [iTreetools.org](http://iTreetools.org).

Figure 12 shows the benefits that all the trees (including trees public and private property) in Lake in the Hills offer. These values were calculated with i-Tree Landscape using a 2010 land cover layer. Each year, Lake in the Hills's trees provide the municipality with \$287,000 worth of benefits. These trees also store a lot of carbon, which is valued at an additional \$2,383,000.





# Lake in the Hills Urban Forestry Summary



CHICAGO  
REGION  
TREES  
INITIATIVE

Our Trees.  
Our Communities.  
Our Future.

## Temperature and Trees

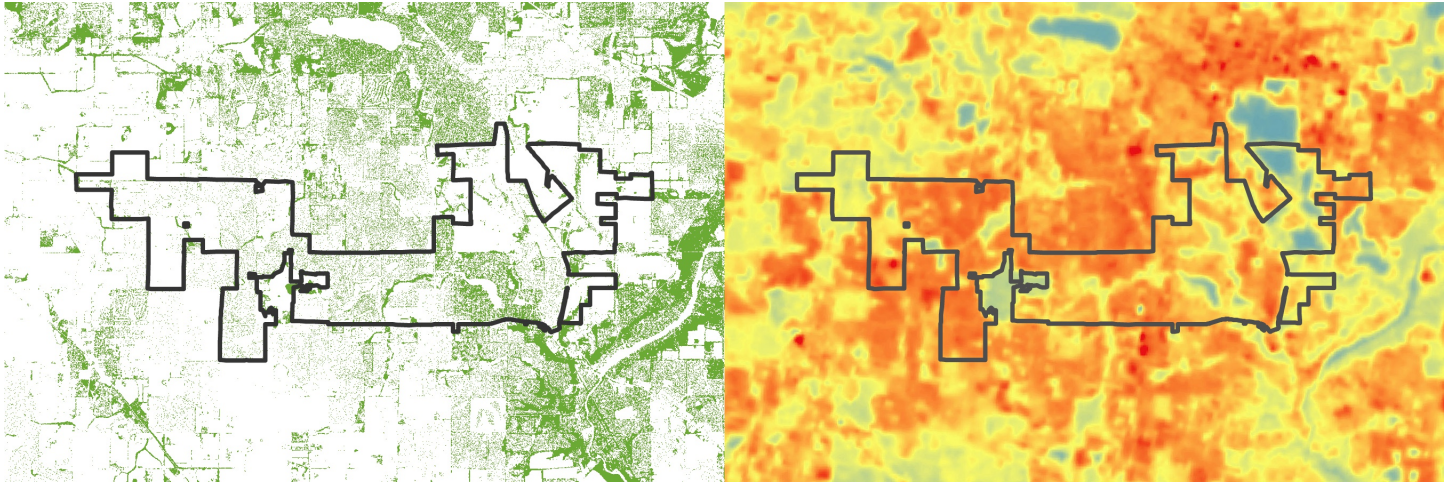


Figure 13: The image on the left shows tree canopy and on the right shows surface temperature. Surface temperature was calculated using a LandSat8 image from July 2017. Areas that have higher tree canopy tend to have lower temperatures.

Cities tend to be hotter than rural areas because buildings and pavement absorb the sun's energy and release it as heat—known as the urban heat island effect. High urban temperatures increase the use of energy within buildings. It can also cause health issues, and extreme heat can even cause death. Trees help lower urban temperatures by

shading built surfaces and through evaporative cooling. Urban areas that have more tree canopy tend to have lower surface temperatures (Fig. 13). Planting more trees in parking lots and around buildings can be especially helpful in reducing urban temperatures and making cities more comfortable.



# Lake in the Hills

## Urban Forestry Summary



**CHICAGO  
REGION  
TREES  
INITIATIVE**

Our Trees.  
Our Communities.  
Our Future.

### Oak Ecosystems – Our Natural Heritage

Oaks are a keystone species in our region’s ecology. They provide habitat and food for countless animals, and they influence which plants grow around them. However, conversion of natural areas to agriculture and development has removed many of the oaks from our region. Only 17% of oak ecosystems remain region wide.

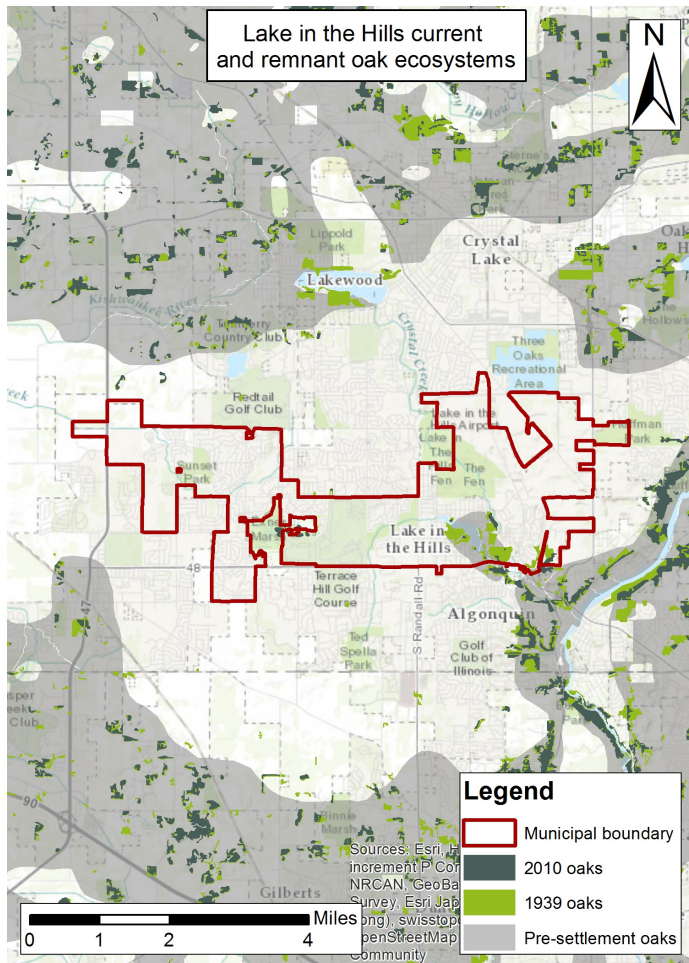


Figure 14: Oak ecosystems were abundant prior to Euro-American settlement. This map shows which of these ecosystems still remained in 1939 and 2010.

Restoring oak ecosystems is a major focus of CRTI. Its efforts include improving oak management in natural areas and encouraging their use in municipal plantings. Many municipalities avoid oaks because some foresters believe that they do poorly as street trees. CRTI strives to dispel these stereotypes and teach foresters how oaks can be used effectively in urban areas. The expanded use of oaks can help increase species diversity and continue the legacy of oaks in our region. For more information, see Chicago Wilderness’s Oak Ecosystem Recovery Plan.

Prior to Euro-American colonization, oaks made up over 60% of the region’s canopy. Now, they only make up 6.5% of municipal plantings. Increasing the use of oaks in municipal areas could make more resilient forests, improve habitat for wildlife, and restore the region’s natural history.

Lake in the Hills had a few forests in the pre-settlement era, but they have mostly been destroyed (Fig. 14).

Find the Oak Ecosystem Recovery Plan at [chicagorti.org/OakRecovery](http://chicagorti.org/OakRecovery).



# Lake in the Hills Urban Forestry Summary



**CHICAGO  
REGION  
TREES  
INITIATIVE**

Our Trees.  
Our Communities.  
Our Future.

## Woody Invasive Species

Woody invasive species like European buckthorn and bush honeysuckles make up over one in three trees in the region. These shrubs were introduced as ornamental specimens, but they have escaped cultivation. Birds eat the berries produced by buckthorn and honeysuckle and disperse the seeds into natural areas. Both genera are extremely disruptive to native plants and animals. They create dense thickets and prevent other species from growing around them (Fig. 15). In natural areas, they are one of the leading contributors to reduced oak regeneration.

It is imperative to remove buckthorn from all land uses, as the seeds can easily travel to natural areas. It is difficult to dictate plantings on private property but educating residents can encourage them to remove it of their own accord. This could include signage explaining invasive removal on public property, or expansion of programs like Conservation@Home.

Woody invasives are becoming more problematic region-wide according to 2010 and 2020 inventories (Fig. 16). For more information on how to manage woody invasive species, see: <https://chicagorti.org/program/stop-invasives/>.



Figure 15: A buckthorn thicket. Notice the lack of understory vegetation and dense shade. Photo credit: Brett Jelinek.

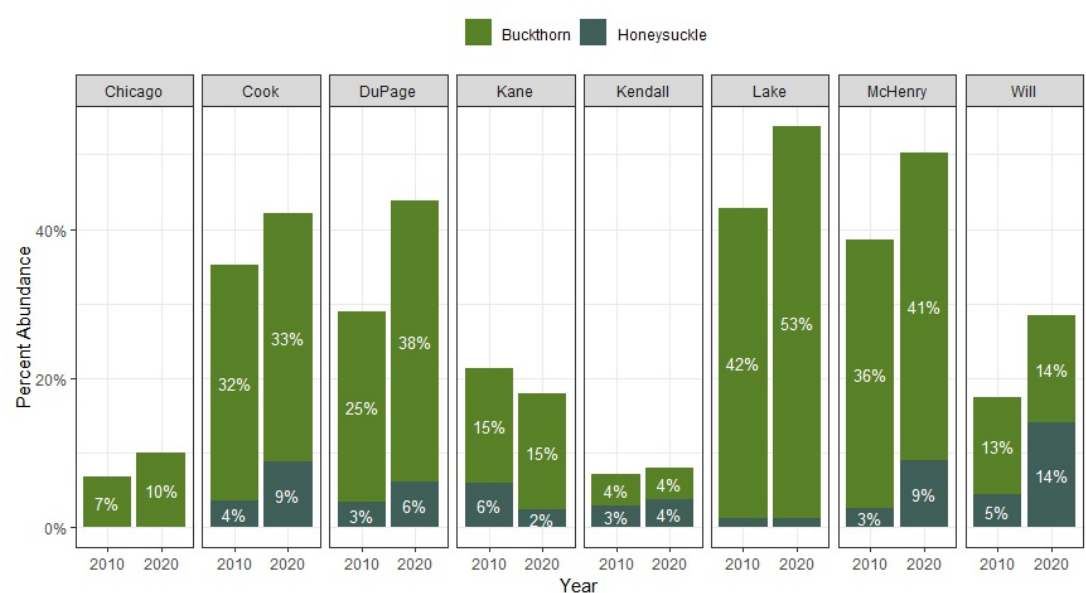


Figure 16: Woody invasive abundance across all counties in 2010 and 2020.

# Lake in the Hills

## Urban Forestry Summary



CHICAGO  
REGION  
TREES  
INITIATIVE

Our Trees.  
Our Communities.  
Our Future.

### Important Considerations for Management of the Urban Forest

A healthy urban forest can provide a wide range of benefits that have significant impacts on quality of life. Understanding what you have is an important first step. Next is to manage the urban forest effectively. There are several key ingredients in a well-managed urban forest and these are resources and organizations that can help you achieve that goal.

1. **Preservation and Protection Ordinances:** Ordinances are the community's policy and guiding document for the care, protection and preservation of the urban forest. The Chicago Region Trees Initiative has staff who will work with you to help you at no cost and templates to get you started.
2. **Tree Inventory:** A tree inventory is a mechanism to inform what trees you have, where they are located, how many there are, and their condition. This is a critical tool in managing the urban forest—especially in improving species diversity and reducing the risk of catastrophic loss. Visit the CRTI website to learn about funding opportunities <https://chicagorti.org/programs>.
3. **Urban Forest Management Plan:** An urban forest management plan is a strategy document that guides communities in allocating manpower and funding to manage the urban forest. It is important to develop a plan that outlines where your community is now and a framework to improve level of care, species selection, proper practices, and qualifications, as skills and resources are developed. A template has been developed to help you get started and to identify areas where your community can begin to improve practices. <https://chicagorti.org/program/tree-ordinance-templates>.
4. **ISA Certified Arborist:** Your community would greatly benefit from having an International Society of Arboriculture certified arborist on staff. It is not a hard process and could improve the professionalism of your team. The Illinois Arborists Association has several training opportunities to train your staff and build skills and knowledge in urban forestry. Note: If you are not ready for staff to assume this role, be sure to use certified arborists to conduct the urban forestry work. A list is available on the IAA website.
5. **Resident Engagement:** 70% of our trees are located on private property. Communities can connect their residents to information and resources that will help them improve the health of the urban forest on their properties. The CRTI website has several resources for individual citizens.

---

#### Important links:

Chicago Region Trees Initiative: [chicagoRTI.org](http://chicagoRTI.org)

Illinois Arborist Association: [illinoisarborist.org](http://illinoisarborist.org)

Illinois DNR Urban Forestry: [www2.illinois.gov/dnr/conservation/Forestry/UrbanForestry](http://www2.illinois.gov/dnr/conservation/Forestry/UrbanForestry)

Openlands TreeKeepers: [openlands.org/what-we-do/trees/treekeepers](http://openlands.org/what-we-do/trees/treekeepers)